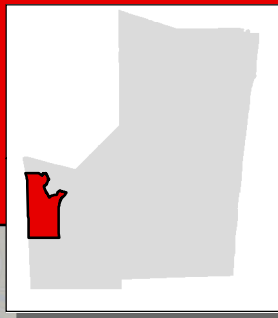


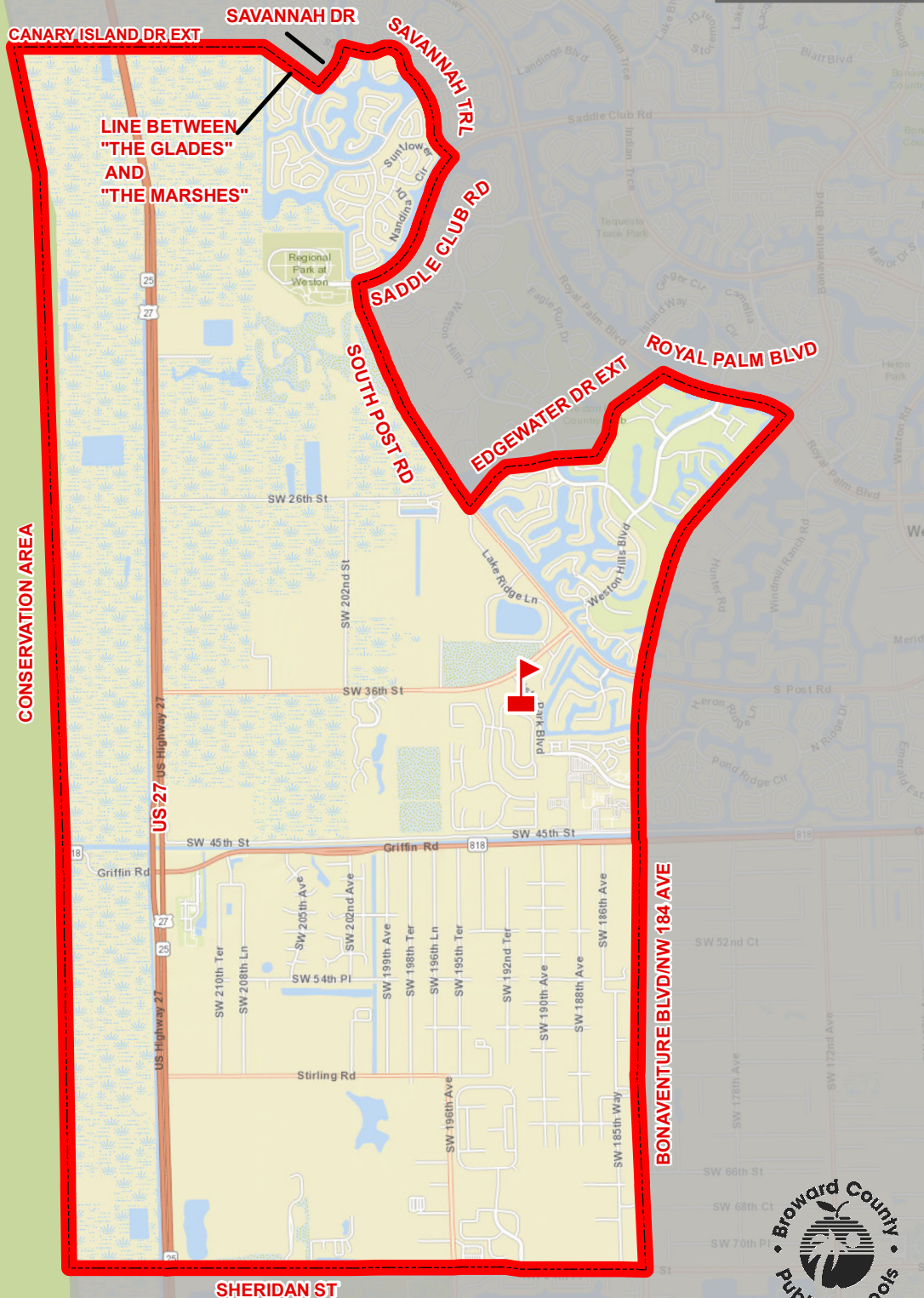
MANATEE BAY ELEMENTARY SCHOOL

19200 SW 36 STREET
WESTON, FLORIDA 33332
754-323-6450

Innovative Program

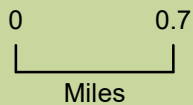


Elementary school students residing in the Conservation Area from the Miami-Dade County line to Interstate I-75 attend Chapel Trail Elementary School.

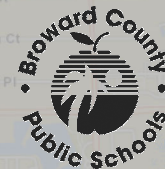


CONSERVATION AREA

MANATEE BAY



Service Layer Credits: Sources: Esri, HERE, Garmin, USGS, Intermap, INCREMENT P, NRCan, Esri Japan, METI, Esri China (Hong Kong), Esri Korea, Esri (Thailand), NGCC, © OpenStreetMap contributors, and the GIS User Community



THIS MAP IS FOR CONCEPTUAL PURPOSES ONLY AND SHOULD NOT BE USED FOR LEGAL BOUNDARY DETERMINATIONS